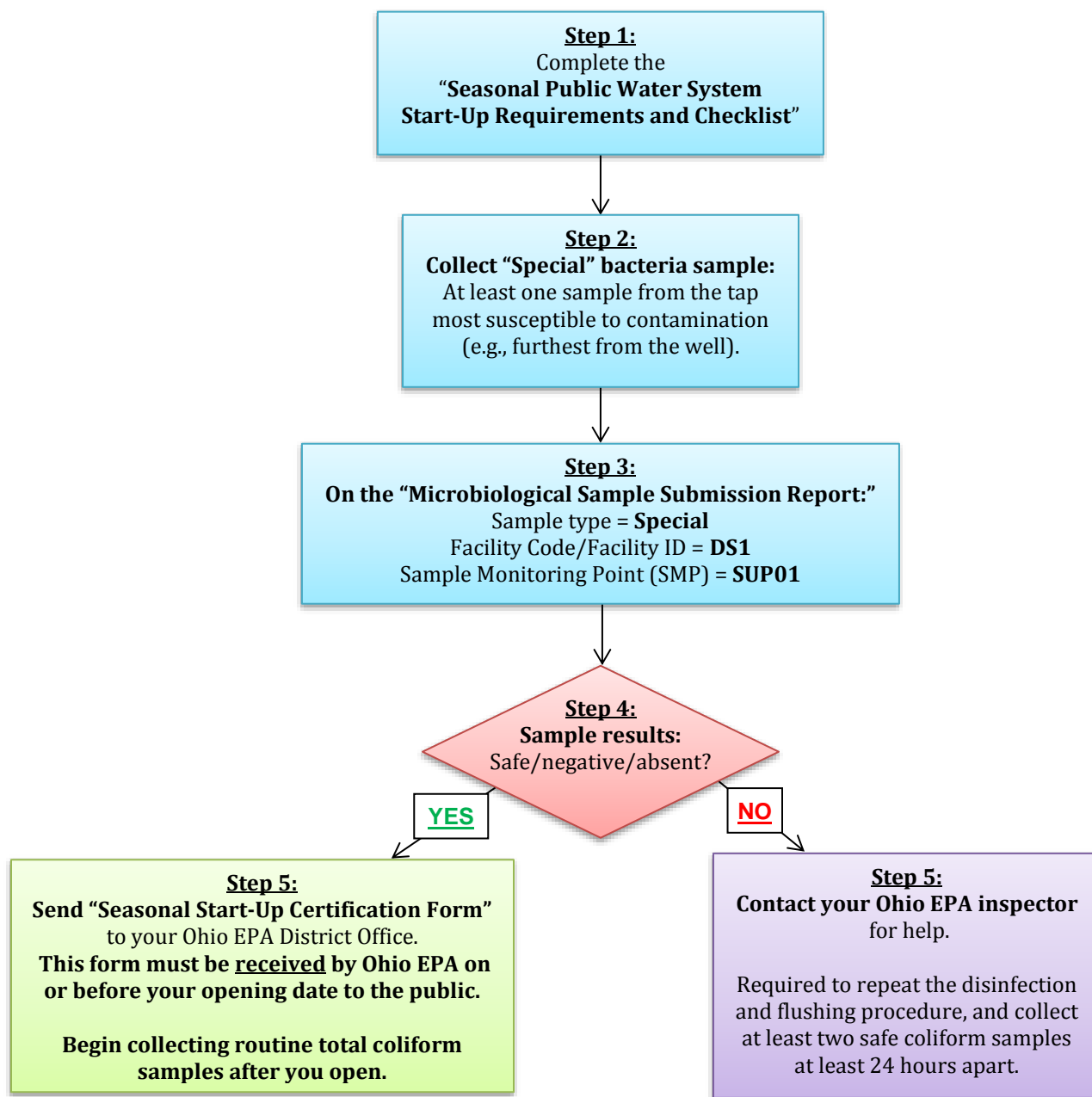


The Revised Total Coliform Rule: Seasonal Start-Up Procedure Flowchart

This flowchart explains the steps required to complete the seasonal start-up procedure for depressurized and partially-depressurized seasonal public water systems. Contact your local Ohio EPA District Office for assistance.



Contact:

For more information, visit: <http://epa.ohio.gov/ddagw/rtrcr.aspx> or contact your inspector in the appropriate District Office:

Northwest: 419-352-8461

Northeast: 330-963-1200

Central: 614-728-3778

Southwest: 937-285-6357

Southeast: 740-385-8501